

TONGUE RIVER MIDDLE SCHOOL SITE IMPROVEMENTS

Client:

Sheridan County
School District #1

Location:

Ranchester, WY

SERVICES PROVIDED

- Surveying
- Design
- Cost Estimates
- Construction Documents
- Plans and Specifications
- Bid Administration
- Contract Administration
- Construction Administration
- Construction Inspection

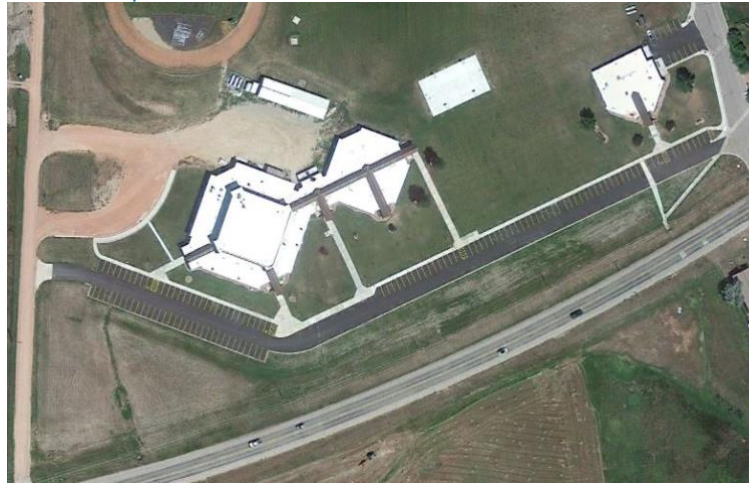
Markets

- Government
- Industrial & Commercial
- Infrastructure

THE PROJECT

The Tongue River Middle School parking area consisted of a long, narrow asphalt parking lot between the middle school and district office. This caused a “frontage road” effect in which vehicles would travel at excessive speeds between the two buildings. The parking lot was also in poor condition with cracking, rutting and spalling throughout. WWC designed a new concrete parking lot to accommodate parking requirements for the middle school while eliminating asphalt surfacing between the school and district office. In addition, improvements to the bus loop were performed as well as incorporating a recycled asphalt pavement event parking area with 70 additional parking spaces to handle overflow parking during school events. The event parking lot also accommodates additional parking demand for the adjacent Tongue River Elementary School.

TRMS Campus Prior to Construction



New Parking Lot and Event Parking

